

You can help vulnerable children and teens achieve a brighter future.



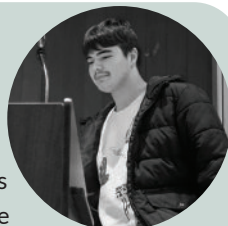
FOSTER CARE

Melani and her husband, George, always wanted a sibling for their daughter. For their family, starting the foster care process was a natural next step. As a Family Support Partner, Melani continues to impact the lives of youth in foster care. With years of lived experience navigating the foster care system and community resources, she helps foster families do the same. Melani wants any prospective foster parents to know that even though there may be difficult moments, opening your home to a child in need is **"...one of the most rewarding journeys you'll experience."**



MENTAL HEALTH

After spending time in a juvenile detention center, 14-year-old James was referred to Shineforth's Child and Family Healing Center. "A therapist with [Shineforth] called me right before James moved there and just said, 'I hear you and believe you, and it will be okay,'" James' mother, Jessica, said. "James' stay at [Shineforth] allowed Jessica to reestablish their relationship, and because she knew he was being taken care of, set boundaries with her son. **"It was a healing experience, not only for James, but for our whole family,"** Jessica said.



SPECIAL EDUCATION

As a child on the autism spectrum, Josiah struggled in school. Josiah's guardian, Mary, recognizes Charterhouse School as a great experience for Josiah's growth and maturity. "Everybody that worked with him was a part of his success," Mary said. **"I credit Charterhouse for giving him what he needed. Because of Charterhouse, I have the faith that he will be able to get a stable job."**



SHINEFORTH Formerly UMFS

BE A CHAMPION FOR CHILDREN IN VIRGINIA

For more than 125 years, this organization has reflected the values that built it — compassion, justice, service, and care for those most in need. We continue to be guided by the words of John Wesley:

"Do all the good you can, in all the ways you can, to all the souls you can, at all the times you can, with all the zeal you can, as long as ever you can."



Your support can make a tremendous difference in the life of a child in need. **Thank you** for partnering with us to offer the kindness needed to help every child in Virginia spark their inner light.

YOUR DONATION TO SHINEFORTH CHILD AND FAMILY SERVICES WILL HELP:

- ✦ Find loving homes for children and teens in foster care
- ✦ Provide therapeutic treatment and support for children and teens struggling with mental health challenges
- ✦ Help students with developmental and behavioral challenges get the special education and support they need to thrive

YOUR GIFT IS NEEDED

Your gift to Shineforth helps children and families in crisis, providing them with much-needed resources and tools for success. **Kind people like you** are crucial partners in this mission, providing critical donations, serving as volunteers, becoming foster parents, and lifting us up in prayer. Together, we can help create a brighter future for children across Virginia.

Connect with us



@goshineforth



/goshineforth

SARAH BEAM

Annual Fund Officer
804.353.4461 x2161
sbeam@shineforth.org

*To make a
donation,
please visit
shineforth.org.*

